

At Azura, we promise each resident will experience a personalized MOSAIC of exceptional care and engagement, based on our core values: COMPASSION, LOVE, INNOVATION, COMMITMENT & KINDNESS.

Suite Style	Tier 1	Tier 2	Tier 3	Tier 4
Homestead	\$6,932	\$8,117	\$8,931	\$9,930
Prairieview	\$7,499	\$8,673	\$9,538	\$10,527
Grandview	\$8,117	\$9,312	\$10,094	\$11,063

**One-Time Community Fee: \$3,000**

**Respite Care: \$300/day**  
*short-term stay of a minimum of 14 days and no more than 28 days*

Our Eau Claire community features two homes purposefully designed to meet the needs of those living with dementia and support them through all stages of the disease. Using principles of the Household Model, everything from the paint to the floorplan has been carefully chosen to provide the best possible experience. Residents can enjoy spaces that speak to their specific desires from sunrooms to salons, living rooms to resident friendly kitchens — even our park-like backyard is equipped with a beautiful walking path and bocce ball court, perfect for intergenerational fun!

Each resident's private suite can be personalized with their belongings. Their care will be also be tailored to their personal needs and provided by our exceptional team trained in evidence-based, scientifically proven dementia best practices and following our exclusive MOSAIC philosophy of engagement and care.



**To visit our community, call 715-471-6366**  
**4803 & 4811 Bullis Farm Rd. Eau Claire, WI 54701**

# ENJOY PERSONALIZED CARE AND SERVICES THAT GO FAR BEYOND WHAT OTHER MEMORY CARE HOMES PROVIDE.

## PHYSICIAN SERVICES

We are proud to provide on-site physician visits for our residents that focus on high quality, personalized, and confidential medical care. We also work with a laboratory and x-ray company that comes right to our Azura home for blood draws, x-rays, ultrasounds, swallow studies, and more.

## PHYSICAL, OCUPATIONAL AND SPEECH THERAPY

Therapy is provided to our residents in the comfort of their Azura home. These services are prescribed by the doctor, and typically covered by Medicare or insurance.

## DNA TESTING

Our commitment to innovation is proven through our use of GeneSight®'s cutting-edge DNA testing to gauge the effectiveness of medications for each resident and to ensure proper dosing and efficacy.

## PSYCHIATRY SERVICES

Our group of highly experienced psychiatrists and nurse practitioners provide on-site psychiatric consultation to our residents. This provides better communication with our team and a better understanding of your loved one's care.

## PODIATRY SERVICES

We offer podiatry services in our homes, and the podiatrists come on site to address needs and concerns for your loved one.

## HOSPICE AND PALLIATIVE CARE

Hospice and palliative care is available at Azura, and your loved one can live with us through the end of their life. Our team members are trained on how to use mechanical lifts and other equipment to make transfers easier and make residents as comfortable as possible while keeping their dignity.

## SALON AND SPA SERVICES

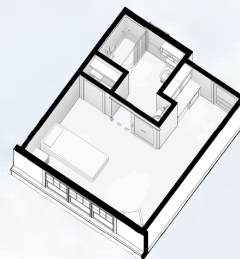
Enjoy a spa day without ever leaving the comfort of your home. We offer in-home beauticians for men and women's hair care, shaving, waxing, nail care and more to ensure our residents are always looking and feeling their best.

## WHAT MAKES US DIFFERENT

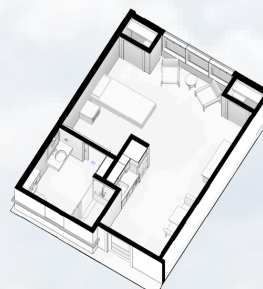
- Warm, loving home designed to enhance quality of life and independence, while ensuring enhanced security through the use of alarmed doors, RCare Emergency Response System, and on-site/on-call nurse oversight
- 24-hour care team trained in dementia care and Azura's innovative MOSAIC philosophy
- Personalized management of medications and expressions with a high caregiver to resident ratio
- Private rooms with utilities, Wi-Fi, bedding, linens, housekeeping, and laundry services included
- Tailored activities to enhance life and give daily moments of joy through holistic therapies of activity, creativity, reminiscence, sensory, cognitive, and more
- Healthy food options including nutritious snacks and dietician-approved meals, that honor personal choice
- Customized assistance with grooming, bathing, dressing, incontinence, and mechanical lifts
- Quality of Life Coordinator and team available to enhance activities and engagement



**Homestead**  
213 Square Feet



**Prairieview**  
273 Square Feet



**Grandview**  
377 Square Feet