



MEMORY CARE • ASSISTED LIVING



MUKWONAGO MEMORY CARE

ROOM & TIER RATES

| Suite Style | Tier 1 | Tier 2 | Tier 3 | Tier 4 |
|-------------|----------|----------|----------|----------|
| Homestead | \$8,580 | \$9,100 | \$9,828 | \$10,816 |
| Prairieview | \$9,444 | \$9,932 | \$10,660 | \$11,648 |
| Grandview | \$10,432 | \$10,920 | \$11,648 | \$12,636 |

One-time community fee: \$3,000

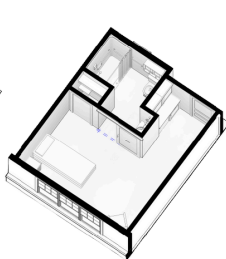
Respite Care: \$400/day

A short-term stay of a minimum of 14 days and up to 28 days.

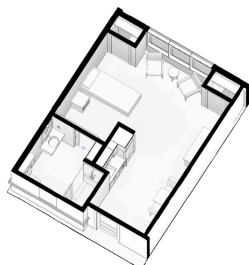
TRANSFORMING THE *Culture* OF CARE



Homestead
283 Square Feet



Prairieview
298 Square Feet



Grandview
416 Square Feet

Welcome to Azura, where our beautifully designed memory care household empowers residents to thrive through our unique MOSAIC philosophy. Following Azura's Household Model, every detail—from soothing wall colors to thoughtfully planned layouts—creates a warm, engaging home for your loved one.

Why Choose Azura?

- **Personalized Private Suites:** Customize with personal belongings. Includes a bed and nightstand, utilities, Wi-Fi, bedding, linens, housekeeping, Direct TV, phone line, washer, dryer and laundry.
- **Tailored 24/7 Care:** Our dedicated team provides individualized support, from medication management to grooming, bathing, dressing, and more, with a high caregiver-to-resident ratio.
- **Holistic Engagement:** Robust daily activity schedule, creative therapies, sensory experiences, and cognitive tasks led by our Quality of Life team.
- **Healthy, Delicious Dining:** Dietitian-approved meals and snacks tailored to resident's needs and preferences.
- **Safety & Peace of Mind:** Fall prevention and safety system in place, as well as continuous nurse oversight (on-site and on-call).
- **Dementia-specific Training:** Required for all Azura team members, including experiencing the Virtual Dementia Tour.

Our pet-friendly environment, attentive care, and vibrant activities ensure residents feel secure, valued, and independent. Rest easy knowing your loved one is in caring hands.

PERSONALIZED CARE AND HEARTFELT SUPPORT YOU DESERVE— DELIVERED WITH WARMTH, DIGNITY, AND A LEVEL OF ATTENTIVENESS THAT GOES FAR BEYOND WHAT'S TYPICALLY FOUND IN MEMORY CARE.

PHYSICIAN SERVICES

We are proud to provide on-site physician visits for our residents that focus on high quality, personalized, and confidential medical care. We also work with a laboratory and x-ray company that comes right to our Azura home for blood draws, x-rays, ultrasounds, swallow studies, and more.

PHYSICAL, OCUPATIONAL AND SPEECH THERAPY

Therapy is provided to our residents in the comfort of their Azura home. These services are prescribed by the doctor, and typically covered by Medicare or insurance.

DNA TESTING

Our commitment to innovation is proven through our use of GeneSight®'s cutting-edge DNA testing to gauge the effectiveness of medications for each resident and to ensure proper dosing and efficacy.

PSYCHIATRY SERVICES

Our group of highly experienced psychiatrists and nurse practitioners provide on-site psychiatric consultation to our residents. This provides better communication with our team and a better understanding of your loved one's care.

PODIATRY SERVICES

We offer podiatry services in our homes, and the podiatrists come on site to address needs and concerns for your loved one.

HOSPICE AND PALLIATIVE CARE

Azura offers Hospice and Palliative Care services, and your loved one can live with us through the end of their life. Our team members are trained on how to use mechanical lifts and other equipment to make transfers easier and make residents as comfortable as possible while keeping their dignity.

T.I.M.E. PROGRAM

Studies have proven that people who engage in consistence brain stimulation can significantly lower the risk of dementia & improve cognition function of the brain. This program is ongoing & meets from 10a-3p with lunch included.

*Not suitable for those living at Azura.

MEMORY CAFE AND SUPPORT GROUP

We proudly support families and caregivers in the community through free resources such as memory cafes, education seminars and support groups. Whether you're navigating a new diagnosis or simply seeking guidance, we're here to offer knowledge, comfort, and connection every step of the way.

WHO WE ARE

Wisconsin-based and family owned, Azura Memory Care and Assisted Living created its name from the Latin word for "blue sky". It fits nicely with the clear, crisp skies found throughout Wisconsin where Azura's communities are based. It also speaks to our founder's desire to create an inspiring company with a healthy and positive environment for our guests, residents and team members. Josh McClellan, founder and CEO of Azura, has spent more than 35 years in the healthcare industry. He started the company in 2008 with a vision to transform the culture of care.

CORE VALUES

CORE VALUES REFLECT OUR CARE

At Azura, we promise each resident will experience a personalized MOSAIC of exceptional care and engagement, based on our core values...

1. We are **COMMITTED** to the care of our residents and team members
2. We **LOVE** what we do and who we do it with
3. We encourage **INNOVATION** and creativity
4. We treat our residents with the utmost **COMPASSION**
5. We treat everyone with **KINDNESS**, dignity and respect

